

# Similes

A simile is a figure of speech which compares two things using the words "like" or "as".

Using similes in your written work adds colour to the text and helps the reader to create "mind images".

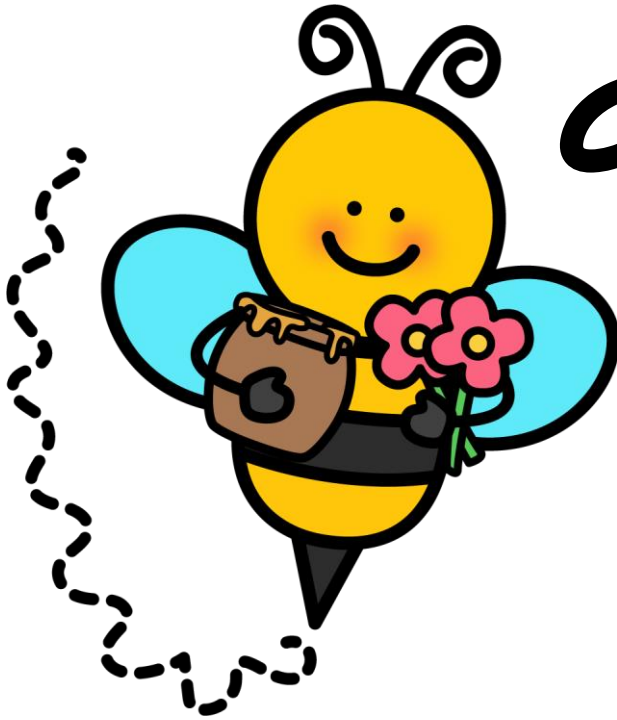
Similes

as blind



as a bat

Similes



as busy  
as a  
bee

Similes

as clean

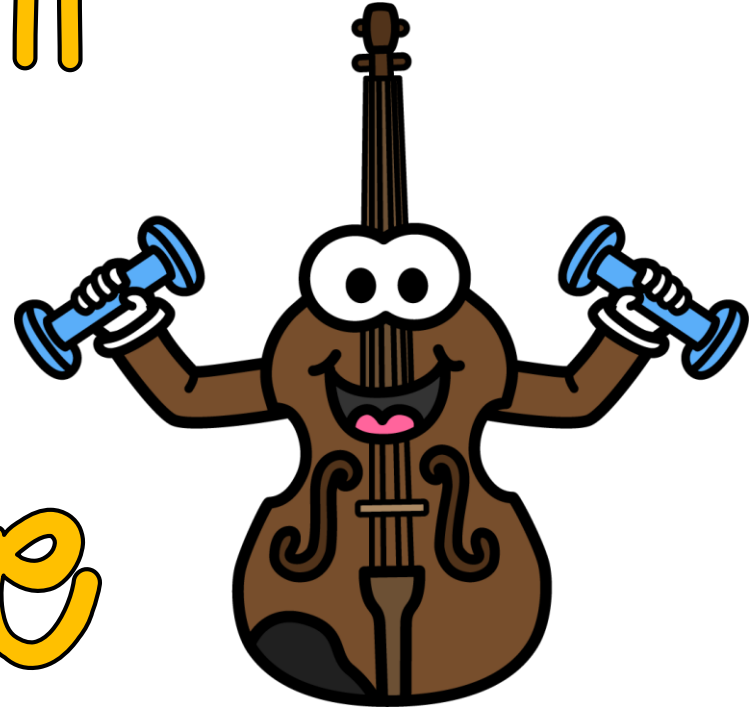
as a

whistle



Similes

as fit  
as a  
fiddle



Similes

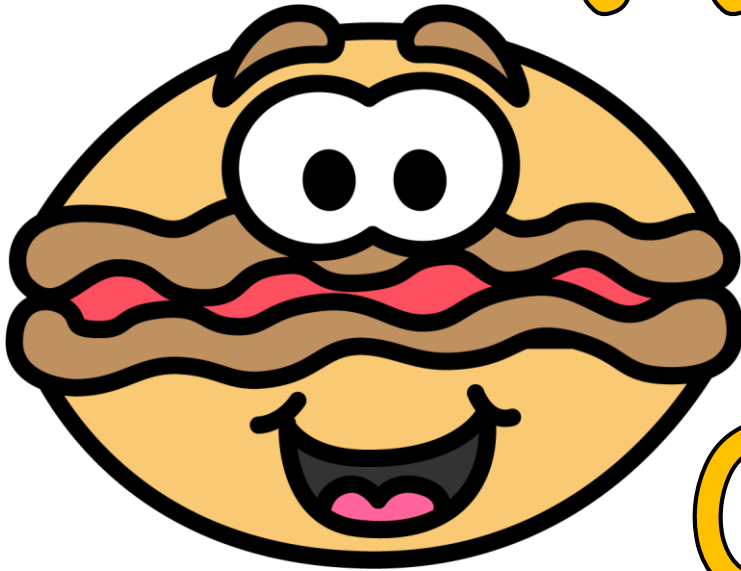


to cry  
like a  
baby



Similes

as happy

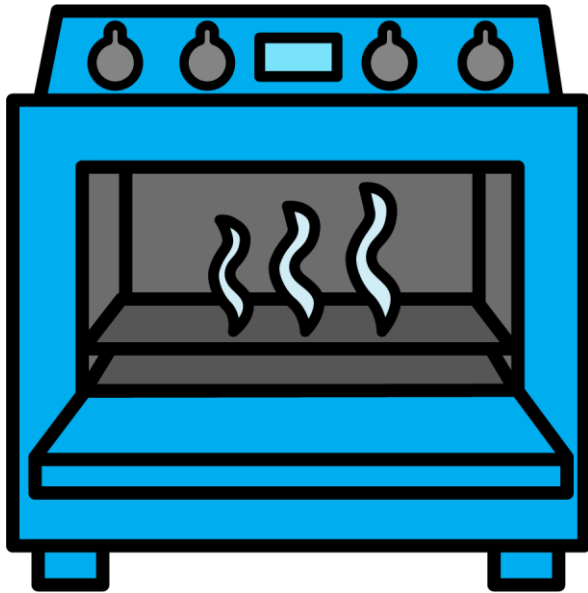


as a

Clam

as hot

Similes



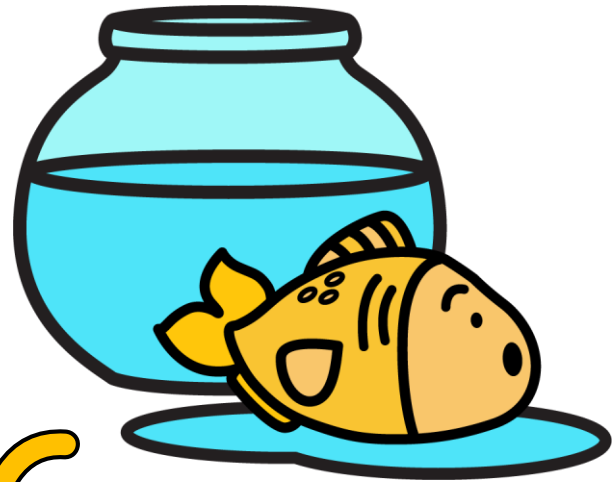
as an  
oven

Similes

like a fish

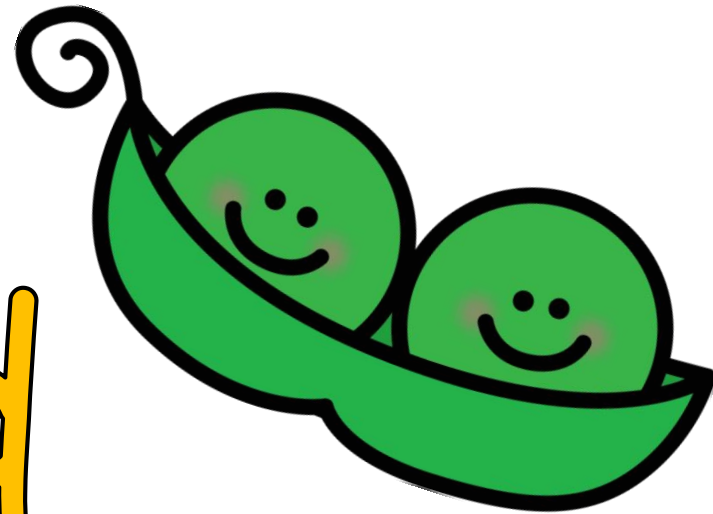
out of

water



Similes

like two peas  
in a  
pod

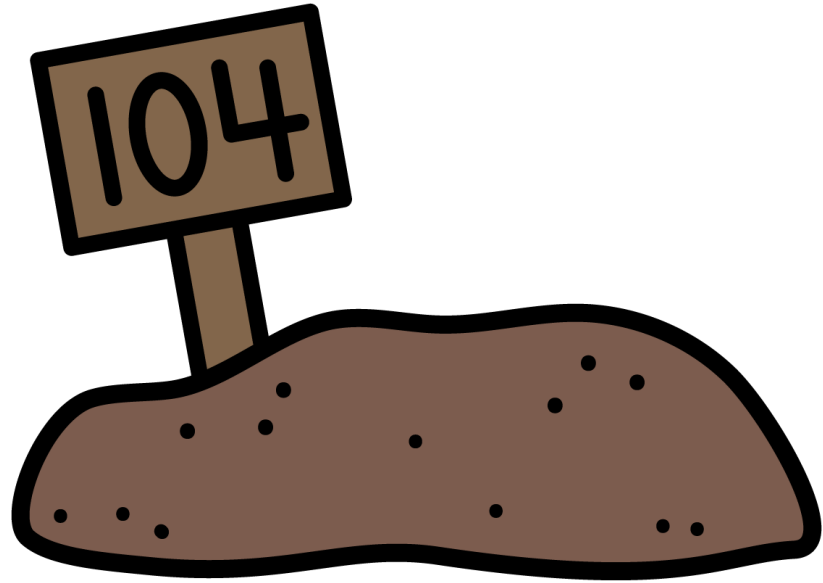


Similes

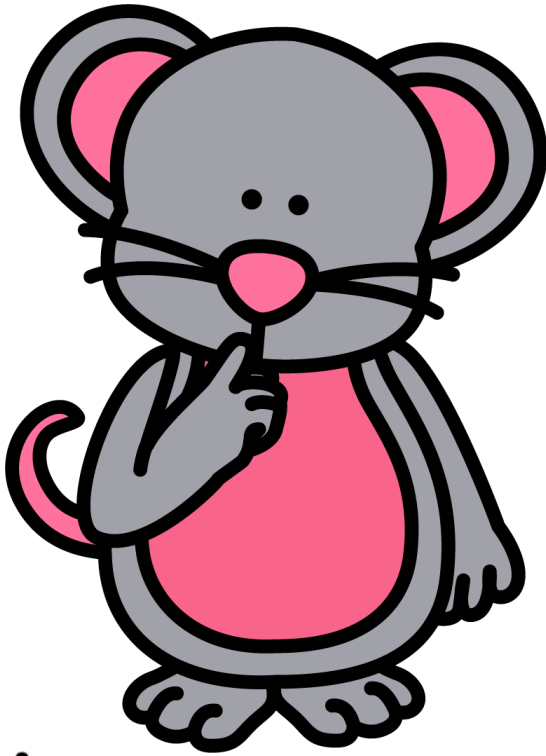
as old

as

dirt

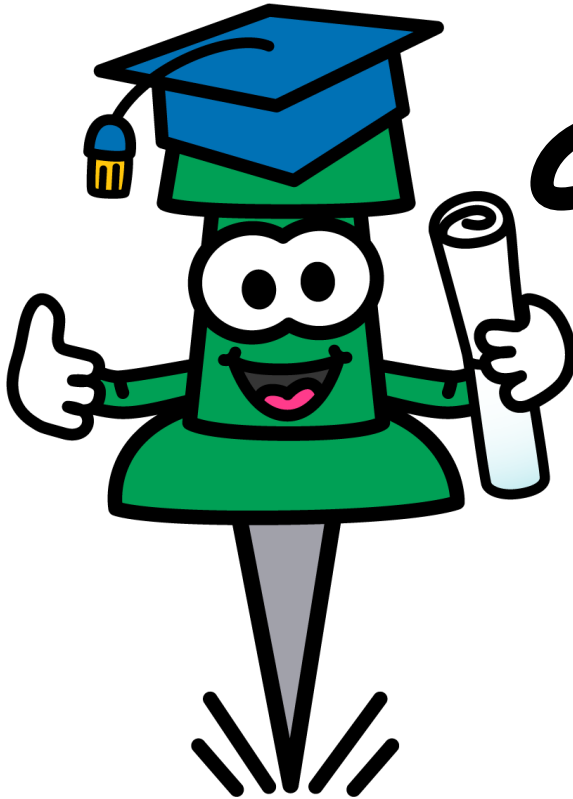


Similes



as quiet  
as a  
mouse

Similes



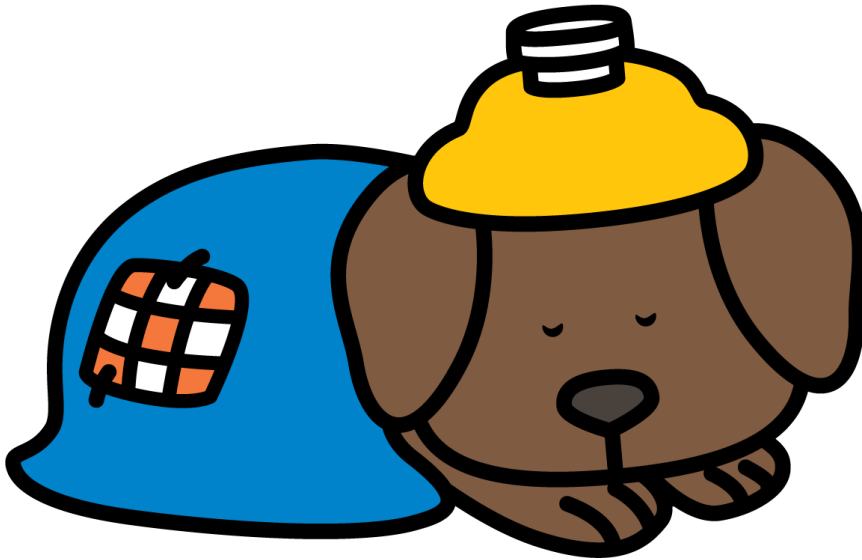
as sharp

as a

pin

Similes

as sick



as a

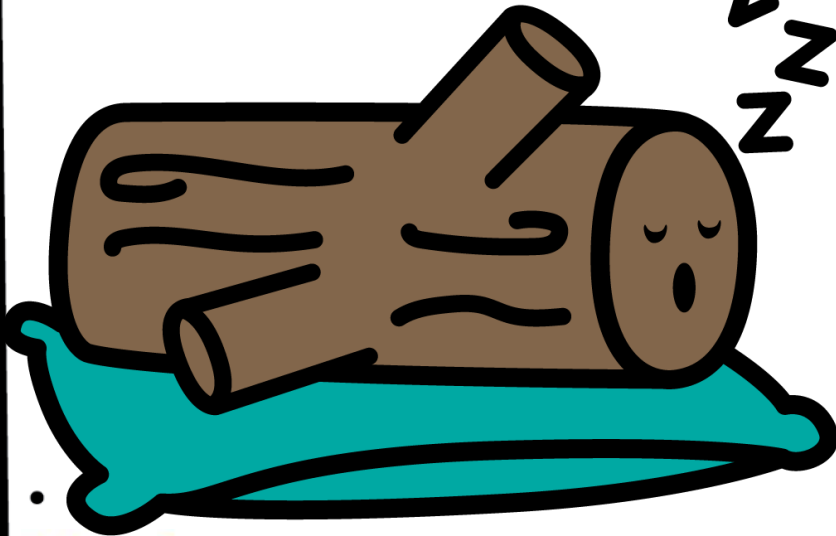
dog



Similes

to sleep

zzz like a



log

Similes

as wise

as an

owl



## Resources used in this file from:



<https://www.teacherspayteachers.com/Store/Creating4-The-Classroom>



<https://www.teacherspayteachers.com/Store/Hello-Literacy>



<https://www.teacherspayteachers.com/Store/Whimsy-Clips>